

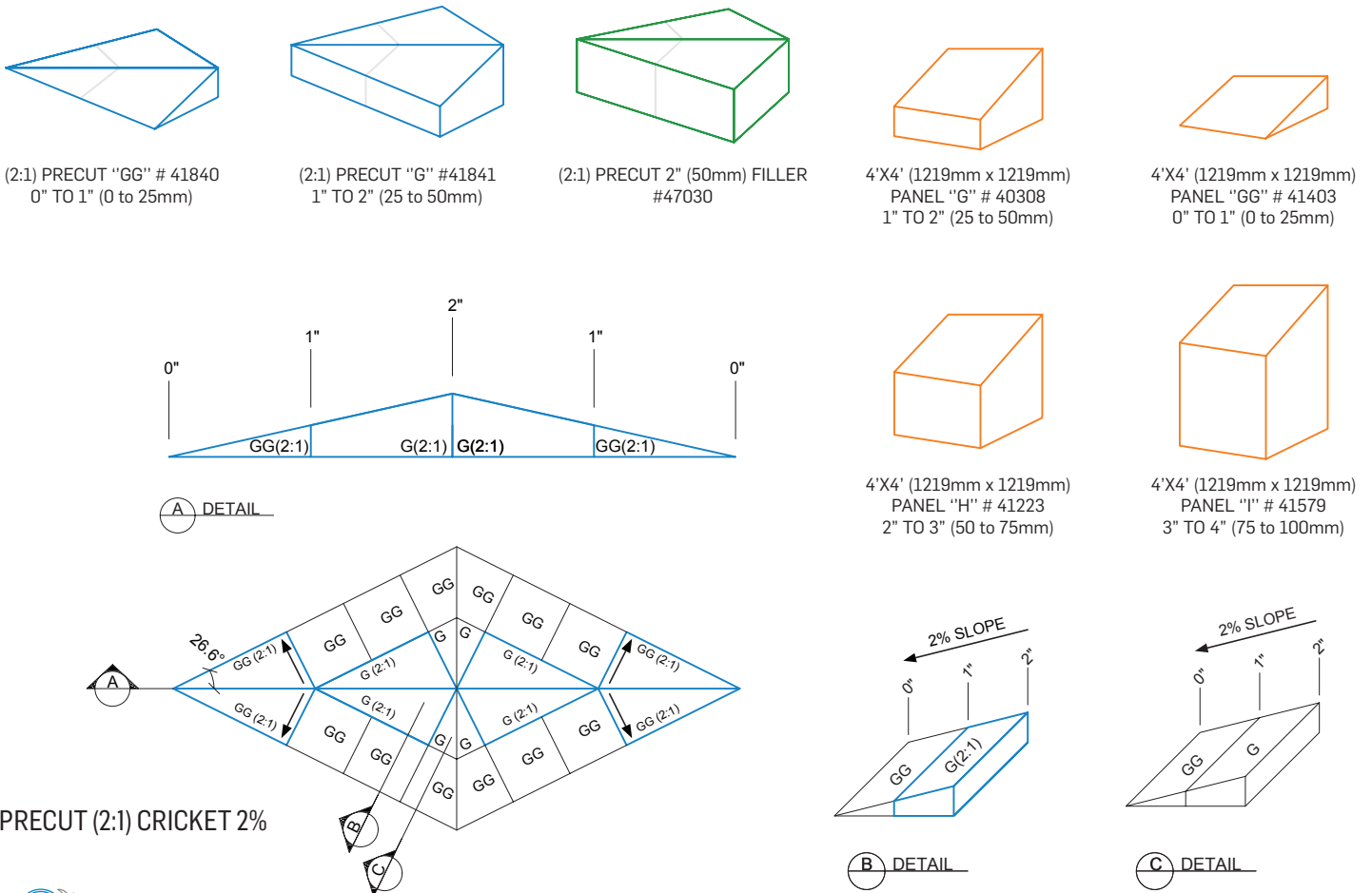
# SOPRA-ISO PLUS

## PRECUT (2:1) CRICKET (2%)

### QUANTITY CHART

# Product code	# 41840	# 41841	# 41403	# 40308	# 41223	# 41579	# 47030
*Length	(2:1) Precut "GG" - 0" to 1" (0 to 25mm)	(2:1) Precut "G" - 1" to 2" (25 to 50mm)	4'X4' Panel "GG" - 0" to 1" (0 to 25mm)	4'X4' (1219mm x 1219mm) Panel "G" - 1" to 2" (25 to 50mm)	4'X4' (1219mm x 1219mm) Panel "H" - 2" to 3" (50 to 75mm)	4'X4' (1219mm x 1219mm) Panel "I" - 3" to 4" (75 to 100mm)	(2:1) Precut 2" (50mm) Filler
Up to 14'-4" (4 368mm)	2	-	-	-	-	-	-
Up to 17'-11" (5 461mm)	2	-	4	-	-	-	-
Up to 32'-2" (9 804mm)	2	2	12	-	-	-	-
Up to 35'-9" (10 896mm)	2	2	12	2	-	-	-
Up to 50'-1" (15 265mm)	4	2	20	10	-	-	2
Up to 53'-8" (16 357mm)	4	2	24	12	2	-	2
Up to 68'-0" (20 726mm)	4	4	32	20	10	-	4
Up to 71'-7" (21 818mm)	4	4	32	22	12	2	4

\* Our precut cricket can accommodate greater dimensions than 71'-7".  
Please contact us for more detail on crickets greater than 71'-7" at: [slope@soprema.ca](mailto:slope@soprema.ca)



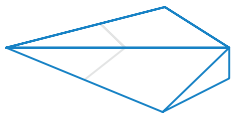
# SOPRA-ISO PLUS

## PRECUT (2:1) CRICKET (4%)

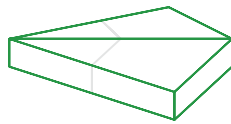
### QUANTITY CHART

# Product code	# 47027	# 41404	# 41405	# 47030	# 40889
*Length	(2:1) Precut "P" - 0" to 2" (0 to 50mm)	4x4 Panel "P" - 0" to 2" (0 to 50mm)	4x4 Panel "PP" - 2" to 4" (50mm to 100mm)	(2:1) Precut 2" (50mm) Filler	4x4 Panel 4" (100mm) Filler
Up to 14'-4" (4368mm)	2	-	-	-	-
Up to 17'-11" (5461mm)	2	4	-	-	-
Up to 32'-2" (9804mm)	4	12	-	2	-
Up to 35'-9" (10896mm)	4	12	2	2	-
Up to 50'-1" (15265mm)	6	20	10	6	-
Up to 53'-8" (16357mm)	6	28	12	6	2
Up to 68'-0" (20726mm)	8	44	20	12	10
Up to 71'-7" (21818mm)	8	44	24	12	14

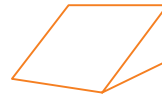
\* Our precut cricket can accommodate greater dimensions than 71'-7".  
Please contact us for more detail on crickets greater than 71'-7" at: [slope@soprema.ca](mailto:slope@soprema.ca)



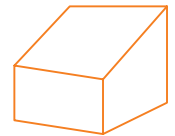
(2:1) PRECUT "P" # 47027  
FROM 0" TO 2" (0 to 50mm)



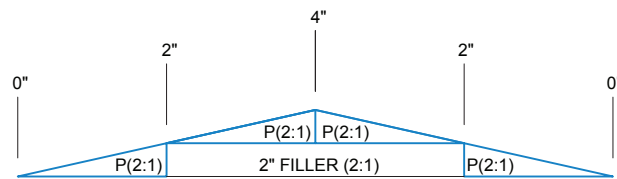
(2:1) PRECUT 2" (50mm) FILLER  
#47030



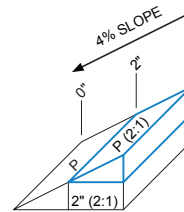
4'X4' (1219mm x 1219mm)  
PANEL "P" # 41404  
FROM 0" TO 2" (0 to 50mm)



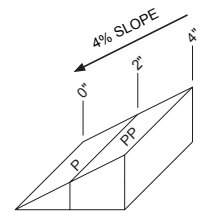
4'X4' (1219mm x 1219mm)  
PANEL "PP" # 41405  
FROM 2" TO 4" (50 to 100mm)



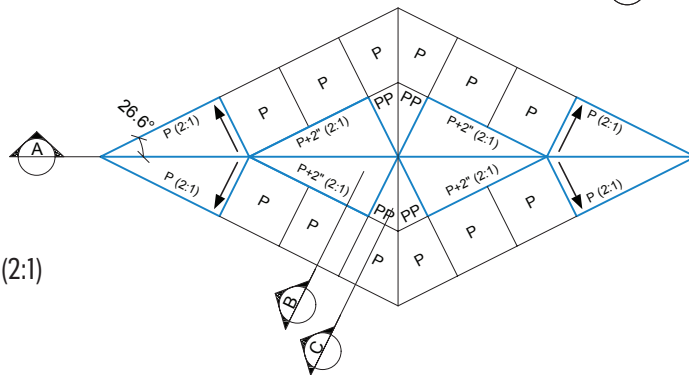
(A) DETAIL



(B) DETAIL



(C) DETAIL



4% PRECUT CRICKET (2:1)

