

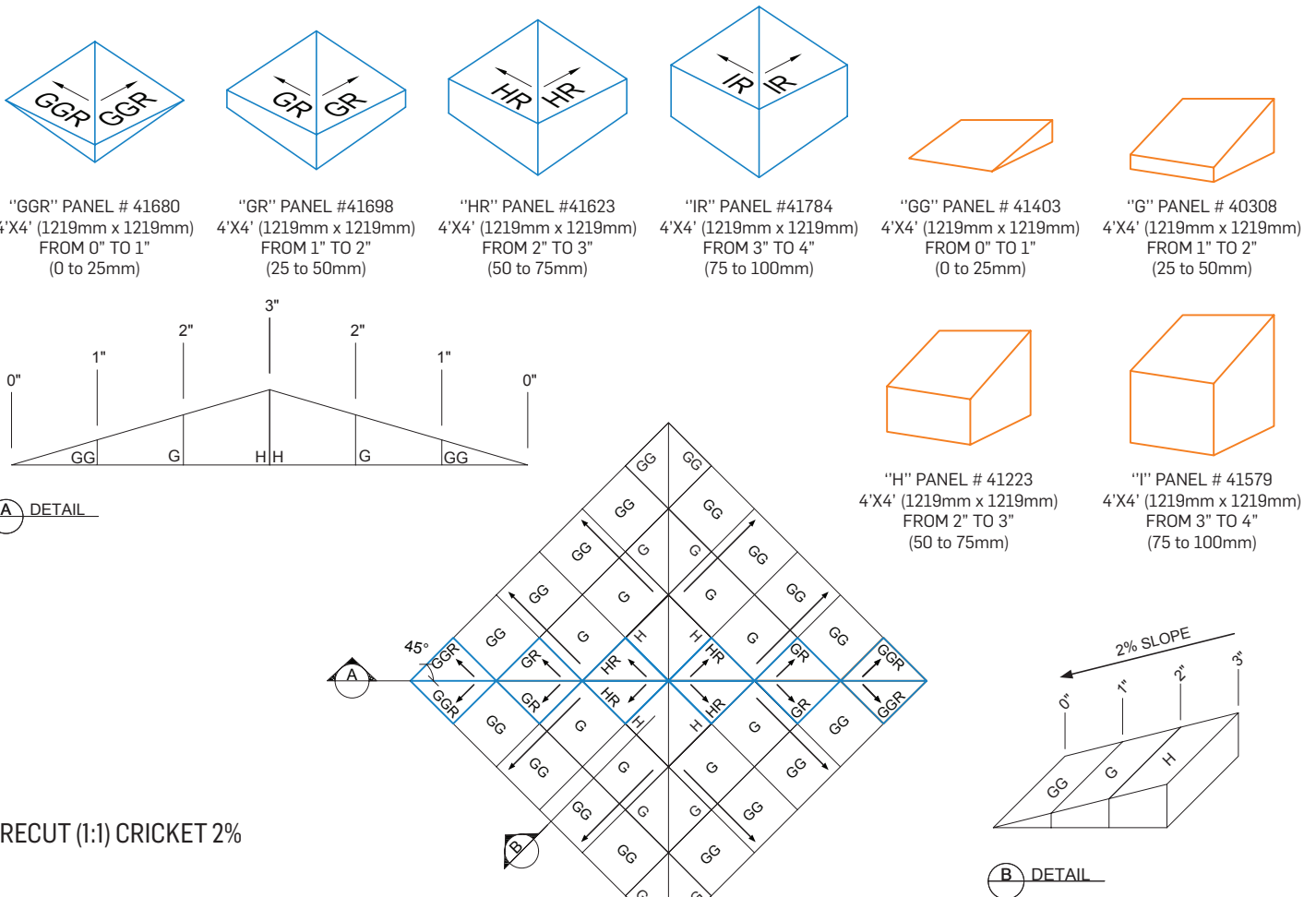
SOPRA-ISO PLUS

(1:1) CRICKET (2%)

QUANTITY CHART

| # Product code | # 41680 | # 41698 | # 41623 | # 41784 | # 41403 | # 40308 | # 41223 | # 41579 |
|-------------------------|--|--|--|---|---|---|---|--|
| *Length | 4'X4' (1219mm x 1219mm) Panel "GGR" - 0" to 1" (0 to 25mm) | 4'X4' (1219mm x 1219mm) Panel "GR" - 1" to 2" (25 to 50mm) | 4'X4' (1219mm x 1219mm) Panel "HR" - 2" to 3" (50 to 75mm) | 4'X4' (1219mm x 1219mm) Panel "IR" - 3" to 4" (75 to 100mm) | 4'X4' (1219mm x 1219mm) Panel "GG" - 0" to 1" (0 to 25mm) | 4'X4' (1219mm x 1219mm) Panel "G" - 1" to 2" (25 to 50mm) | 4'X4' (1219mm x 1219mm) Panel "H" - 2" to 3" (50 to 75mm) | 4'X4' (1219mm x 1219mm) Panel "I" - 3" to 4" (75 to 100mm) |
| Up to 11'-4" (3454mm) | 4 | - | - | - | - | - | - | - |
| Up to 17'-0" (5181mm) | 2 | 2 | - | - | 8 | - | - | - |
| Up to 22'-8" (6908mm) | 2 | 2 | - | - | 12 | 4 | - | - |
| Up to 28'-3" (8610mm) | 2 | 2 | 2 | - | 16 | 8 | - | - |
| Up to 33'-11" (10337mm) | 2 | 2 | 2 | - | 20 | 12 | 4 | - |
| Up to 39'-7" (12065mm) | 2 | 2 | 2 | 2 | 24 | 16 | 8 | - |
| Up to 45'-3" (13792mm) | 2 | 2 | 2 | 2 | 28 | 20 | 12 | 4 |

* Our precut cricket can accommodate greater dimensions than 45'-3".
Please contact us for more detail on crickets greater than 45'-3" at: slope@soprema.ca



PRECUT (1:1) CRICKET 2%



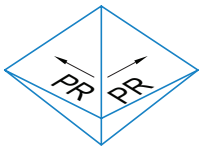
SOPRA-ISO PLUS

(1:1) CRICKET (4%)

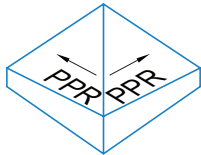
QUANTITY CHART

| # Product code | # 41621 | # 41683 | # 41404 | # 41405 | # 40889 |
|-------------------------|---|--|--|---|--|
| *Length | 4'x4' (1219mm x 1219mm) Panel PR - 0" to 2" (0 to 50mm) | 4'x4' (1219mm x 1219mm) Panel PPR - 2" to 4" (50 to 100mm) | 4'x4' (1219mm x 1219mm) Panel P - 0" to 2" (0 to 50mm) | 4'x4' (1219mm x 1219mm) Panel PP - 2" to 4" (50 to 100mm) | 4'x4' (1219mm x 1219mm) 4" (100mm) Filler Panel |
| Up to 11'-4" (3454mm) | 4 | - | - | - | - |
| Up to 17'-0" (5181mm) | 2 | 2 | 8 | - | - |
| Up to 22'-8" (6908mm) | 2 | 2 | 12 | 4 | - |
| Up to 28'-3" (8610mm) | 4 | 2 | 16 | 8 | 2 |
| Up to 33'-11" (10337mm) | 4 | 2 | 24 | 12 | 4 |
| Up to 39'-7" (12065mm) | 4 | 4 | 32 | 16 | 8 |
| Up to 45'-3" (13792mm) | 4 | 4 | 40 | 24 | 16 |

* Our precut cricket can accommodate greater dimensions than 45'-3".
Please contact us for more detail on crickets greater than 45'-3" at: slope@soprema.ca



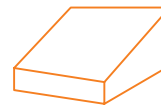
"PR" PANEL # 41621
4'X4' (1219mm x 1219mm)
FROM 0" TO 2"
(0 to 50mm)



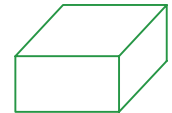
"PPR" PANEL #41683
4'X4' (1219mm x 1219mm)
FROM 2" TO 4"
(50 to 100mm)



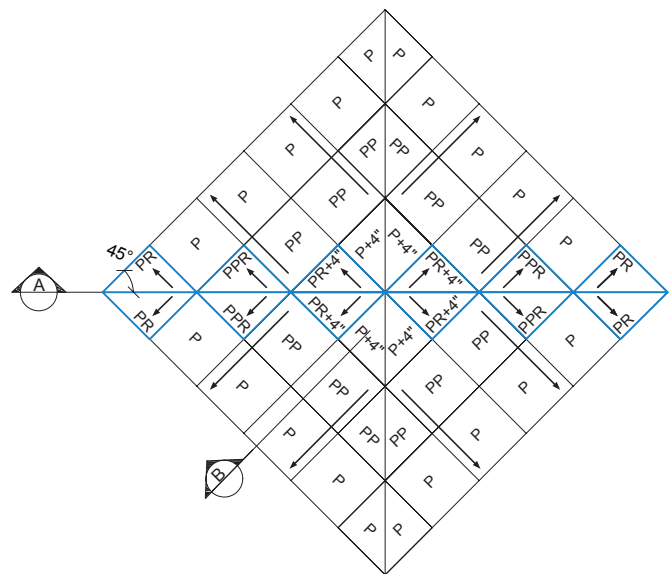
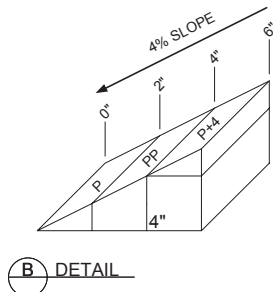
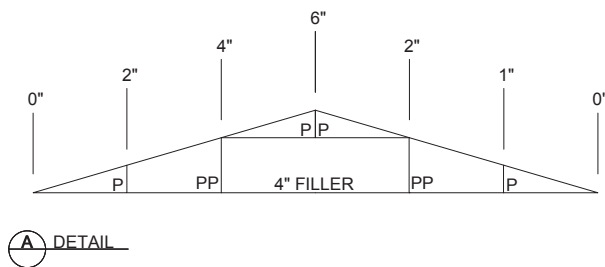
"P" PANEL # 41404
4'X4' (1219mm x 1219mm)
FROM 0" TO 2"
(0 to 50mm)



"PP" PANEL #41405
4'X4' (1219mm x 1219mm)
FROM 2" TO 4"
(50 to 100mm)



"4" (100mm)
PANEL FILLER 4'X4'
(1219mm x 1219mm)
40889



PRECUT (1:1) CRICKET 4%

